



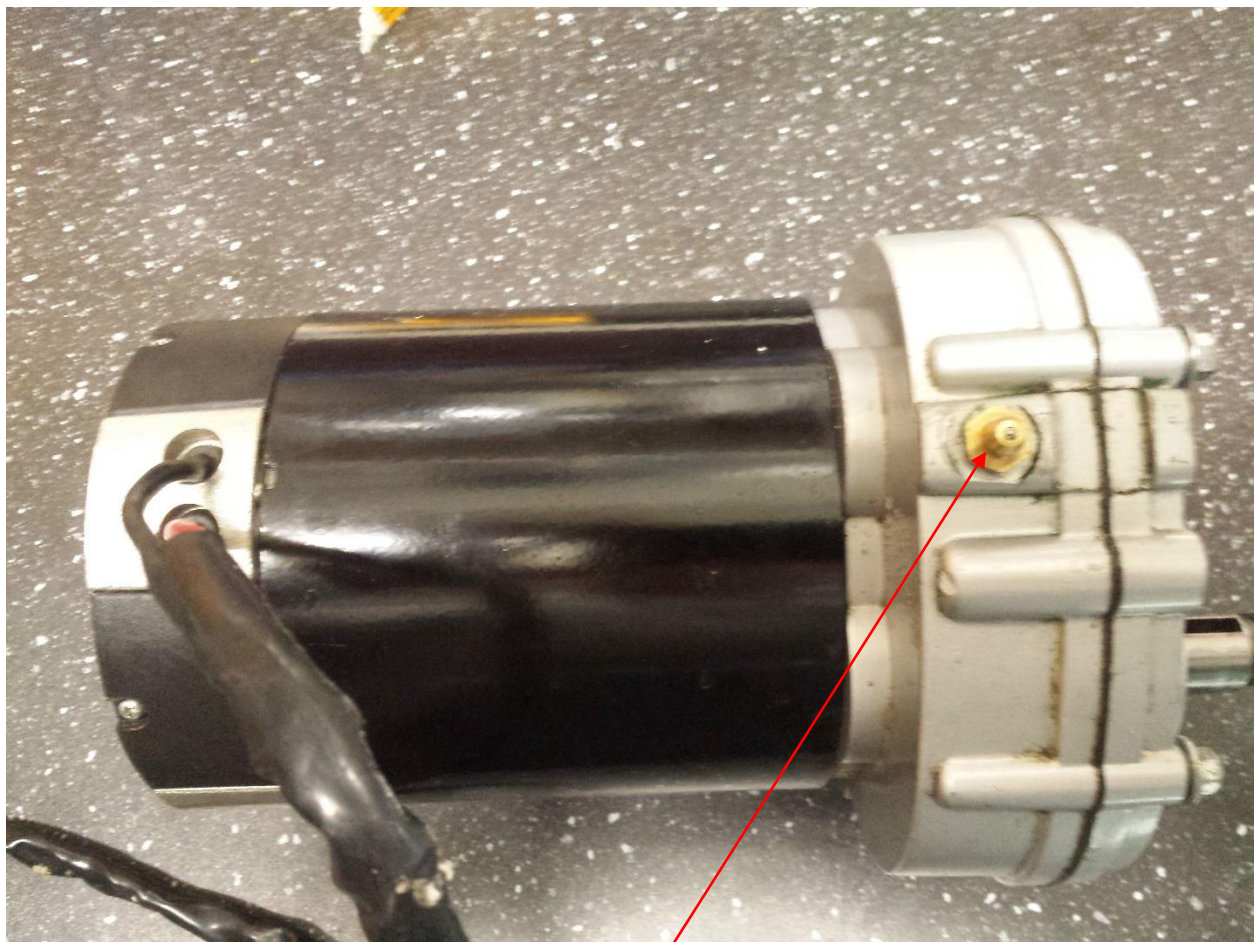
## FourStar Golf Cruiser Determining Gearbox type

All new FourStar Golf Cruisers are fitted standard with a helical cut gearbox for smooth and quiet operation.

Some of the older models are fitted with straight cut gears which can be noisy and vibrate. EVE can supply and fit replacement gears for your cruiser in order to have you running silent and smooth.

Here is how to determine which type of gears you have in your FourStar Golf Cruiser.

-Remove the brass grease nipple on the top of the motor/gearbox



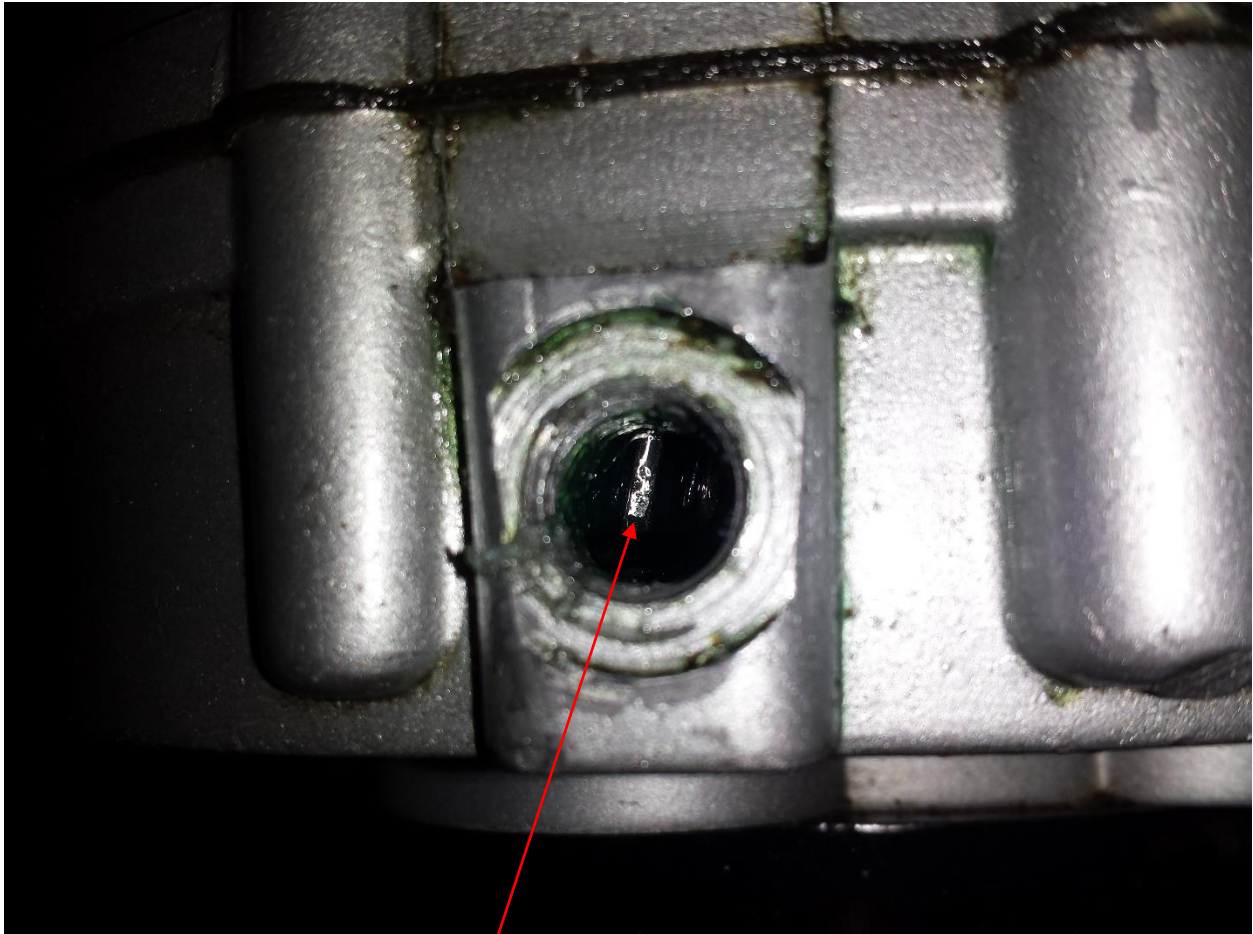
Grease nipple

Have a look inside to see what type of gears are in the gearbox.

If they are on a slight angle, they are helical cut type.

If they are straight, then they are the older type straight cut type.

You may need to use a torch to see.



Helical cut gear, note the angle. Straight cut will run perpendicular to the casing of the gearbox.

Contact us today to upgrade to the helical cut gears.

**Electric Vehicles Enzed**

**222 Ruahine Street, Palmerston North, New Zealand**

**0800 000 605 [www.electricvehiclesenzed.co.nz](http://www.electricvehiclesenzed.co.nz)**

© 2015 Electric Vehicles Enzed Ltd. Document and contents may not be used without written permission.